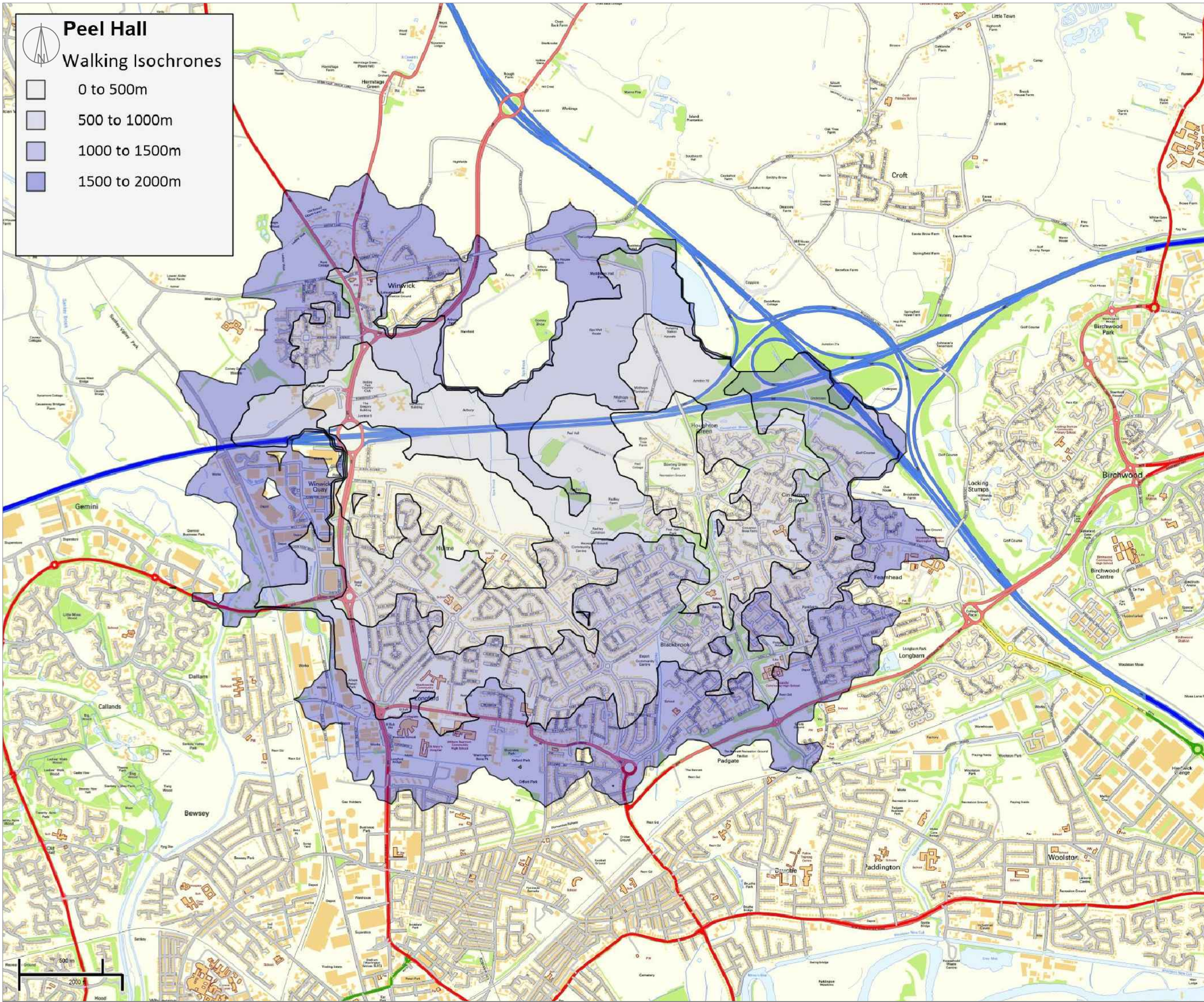


Appendix 13

Walking Isochrones Plan



Peel Hall

Walking Isochrones

- 0 to 500m
- 500 to 1000m
- 1000 to 1500m
- 1500 to 2000m

NOTES:
© Crown Copyright and database rights 2016 (OS License 100035409).

ISSUE	REASON FOR REVISION	DATE

PROJECT:
**PEEL HALL,
WARRINGTON**

CLIENT:
**SATNAM MILLENNIUM
LTD**

PROJECT REFERENCE:	DRAWING NUMBER:	SCALE:
1107	35	SCALE SHOWN

Highgate*Transportation*
www.highgatetransportation.co.uk
Box 13, 42 Triangle West
Park Street, Bristol BS8 1ES
07973 375 937 / 07595 892 217
© Highgate Transportation Limited

TITLE:
WALKING ISOCHRONES

DATE:	DRAWN BY:	CHECKED:
30/06/16	FB	DT